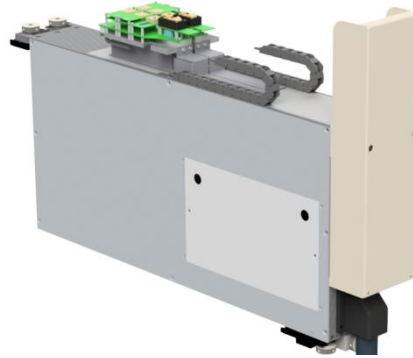


ELECTRO-2-OPENTOP

Electrical measurement of components – Open-Top Base



Depending on the customer requirement, the individual components can be measured electrically by the ELECTRO-2-OPENTOP measuring module. If during this process components are identified as defective, they can be sorted out via the axis system directly into another module or stored temporarily for future retesting. Electric measurement of the components according to customer specification is performed utilizing special measuring sockets on base circuit boards. Depending on the measuring tasks, the appropriate measuring equipment is integrated in the measuring module. As standard design, the ELECTRO-2-OPENTOP measuring module is equipped with 2x actuators to open an Open-Top base as well as 2x3 slots for measuring bases with direct contact.

Product description/functions

- Two measuring bases parallel for simultaneous measuring of two components
- Measuring sockets for up to four different component types in parallel and without retooling possible: 2x3 measuring sockets with direct contact, 2x1 measuring sockets with opening mechanism
- Fastening of the measuring sockets on motherboards with plug-in connectors
- Position correction of measuring sockets based on values determined by the image processing module for repositioning the axis system for position correction of the component
- Measuring sockets with direct contact: Axis system presses the component into the measuring socket, measuring of the component, removal of the component by the axis system
- Measuring socket with opening mechanism (Open-Top base):
 - Opening and closing of the Open-Top base from beneath through an opener
 - Positioning of the component in the open Open-Top base by the axis system, closing of the Open-Top base, measurement of the component
 - Completed measurement is followed by automatic opening of the Open-Top base, removal of the component by the axis system
- In addition to conventional measurements such as SPI Test, Analog Test, In-Circuit Test, customer-specific measurements possible as well
- Measuring electronics separately available for each measuring base
- Integration of customer-specific measuring equipment possible

Options

HOTF	Greater opener force of the Open-Top base (max. 150 N)
Measuring equipment	Customer-specific measuring equipment
Contacts	Customer-specific contacts

Technical data

Dimensions W/H/D [approx. mm]	120 x 515 x 827
Weight	30 kg
Media:	
AC	–
DC	24 / 12 V
Compressed air	6 bar
Vacuum	–
Other	Ethernet 100 Mb

Accessories

• Type-specific measuring sockets
• Type-specific measuring electronics

Detailed drawings

